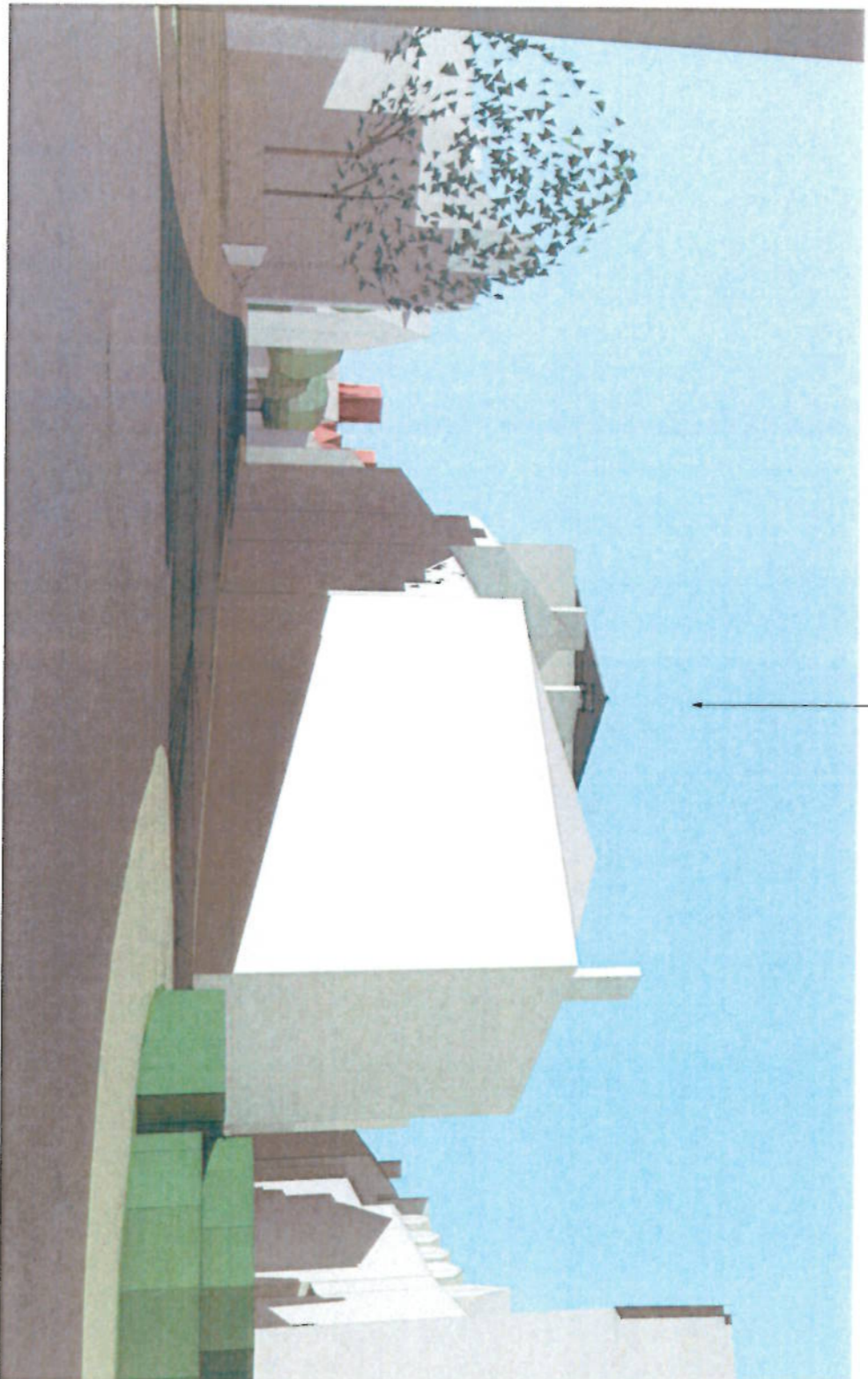


CIRCULATED AT MEETING AGENDA ITEM 4C) HILARY HOUSE, ST SAVIOUR'S PLACE

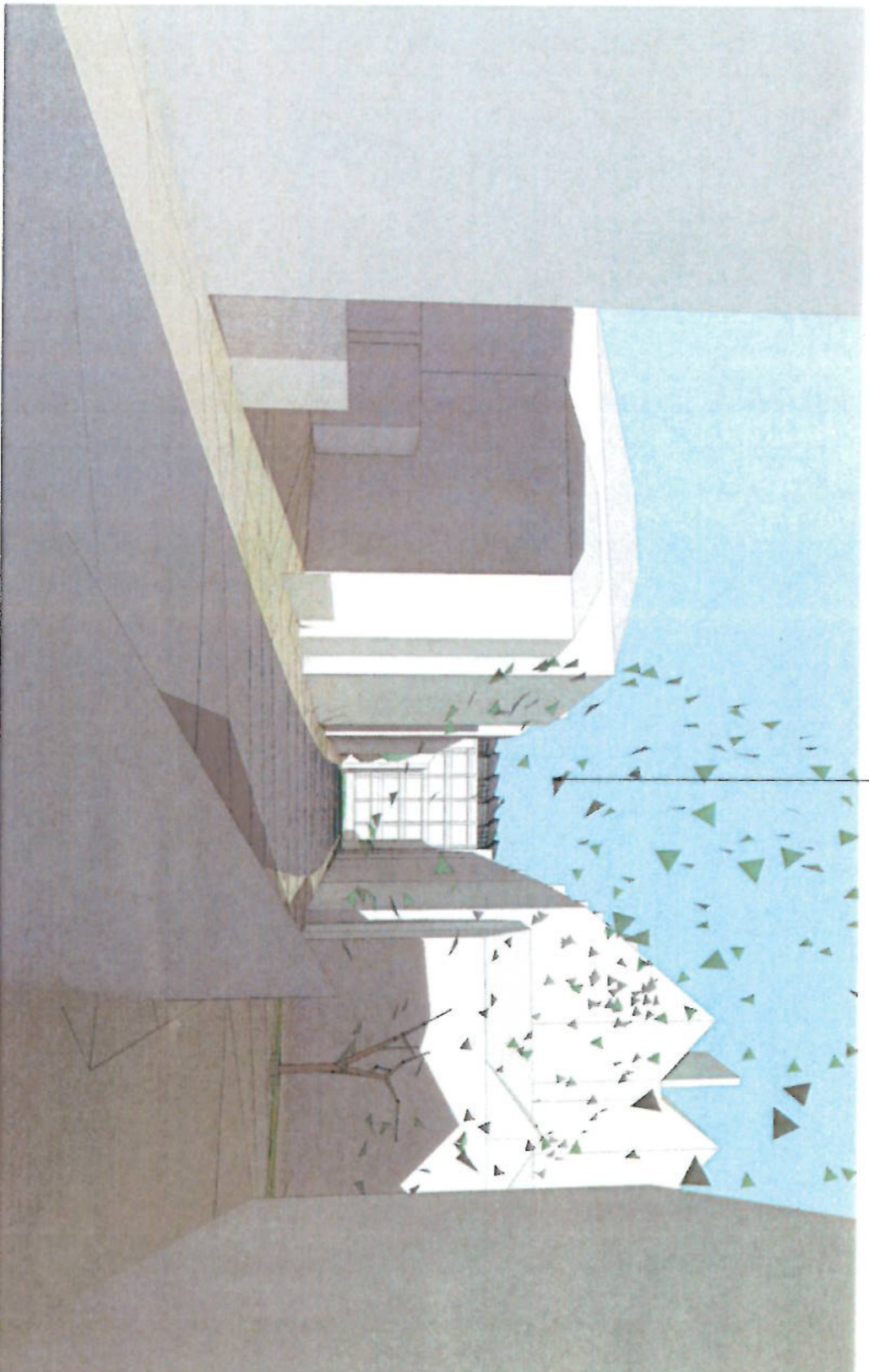


Glimpse of new pitched roof adds a more vertical emphasis and skyline interest and improved visual harmony on Paasholme Green. The roof sweeps down at this end and is only 1.9m above the parapet.

Always compare other drawing/document types with the latest published PDF version to confirm you are referring to current information.
DIMENSIONS All dimensions and areas shown are as designed only. Actual (as built) dimensions and areas are to be confirmed by site measurement. Dimensions and areas on this drawing are measured as shown. If in doubt, please request confirmation.

Model View as Proposed

A more fragmented and appropriate scale is introduced to the roofscape on St Saviours Place beyond. Interest is added to the focal point of the vista. Any increase in apparent height is minimised by using a different grid to that below so that vertical elements do not run through. However, the grid module is the same as that of the parent building for better visual integration.



PDF version to confirm you are referring to current information.
DIMENSIONS All dimensions and areas shown are as designed only. Actual (as built) dimensions and areas are to be confirmed by site measurement. Dimensions and areas on this drawing are measured as shown. If in doubt, please request confirmation.

Model View as Proposed